

The Reentry First-Stop Center

Overview of the First-Stop Center Operations

**Presented to
TARRANT COUNTY REENTRY COALITION**

August 21, 2015



“Reentry work is homelessness prevention.”

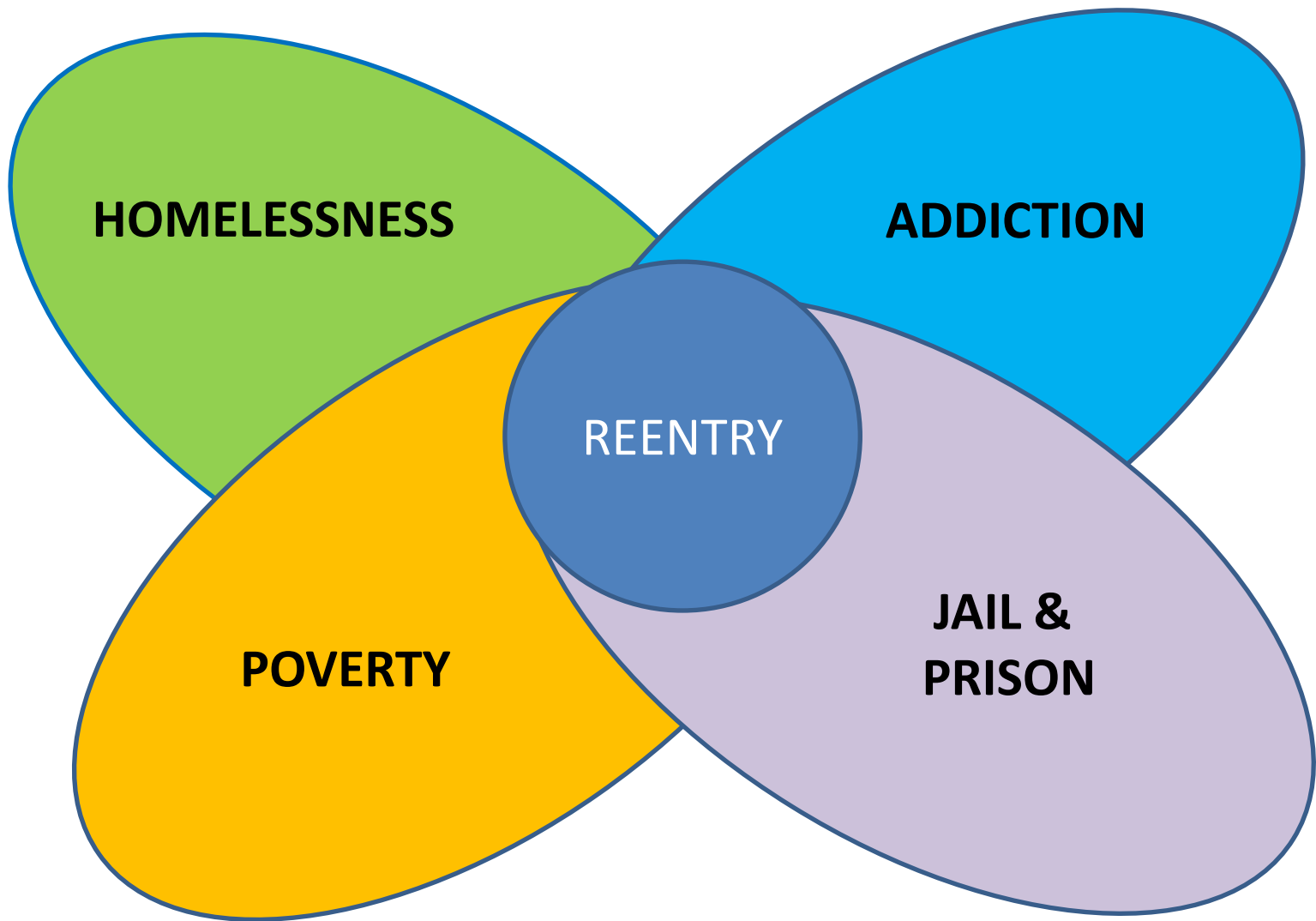
--Mike Doyle

“If we want people to be good neighbors when they get home from prison, maybe we should be neighborly first.”

--Richard Wright



OVERLAPPING, INTER-LOCKING CYCLES THAT NEED TO BE BROKEN



The Reentry First-Stop Center for Tarrant County

“Logic Model – Pilot Phase” (Rev. 02)

Assumptions

7,000 adults return to Tarrant County from state prison every year

Many more exit the jail system and the Federal prison system and seek to reenter the community

A community-based proactive approach to reentry services will have a dramatic impact on reducing criminal recidivism

Knowledge of and access to community resources will make a huge difference in the outcomes of adults’ lives in their reentry journey

Most adults can self-manage their reentry if they just know where the resources are

NOTE: Items in *italics* are not in place during the Pilot Phase.

Inputs

- **NEIGHBORS** (adults in reentry)
 - Parolees
 - Probationers
 - Unsupervised
- **PROVIDERS**
 - Federal
 - State
 - Local
 - Faith-Based
 - Community-Based
- **FUNDERS**
 - County
 - Foundations
 - Major Donors
 - Grants (Fed)
 - Partners
- **STAFF**
 - Management
 - Navigators
 - *Other Paid Staff*
 - Volunteers
 - SER Workers
 - *Vista Workers*
 - *College Interns*

Activities

- **WELCOME**
 - Resources
 - Information
 - Assistance
- **ORIENTATION**
 - Resources
 - Employment Strategies
 - Job Club
 - Higher Education Strategies
- **NAVIGATION**
 - Intake
 - Preliminary Assessment
 - Quick-Screen
 - Identification of Barriers
 - Referrals to Partners
- **COACHING**
 - *Initial Coaching Session*
 - *Screening for Major Needs Barriers, Issues*
 - *On-Going Client Relationship*

Outputs

- Neighbors who attend Orientation Class
- Neighbors who receive Navigation services
- Neighbors referred to partners to receive case management and social services
- Neighbors who get a minimum wage job
- Neighbors who get a living wage job
- Neighbors who get their G.E.D. or high school equivalency
- Neighbors who enroll in college

Outcomes

- % of neighbors who are gainfully employed after six months
- % of neighbors who are attending college after six months
- % of neighbors who are re-incarcerated after six months
- % of neighbors who have started their own businesses after six months
- % of neighbors who attribute the First-Stop Center as a key to their success

Impact

- Criminal Recidivism Reduced in Measurable Ways
- Enhanced Public Safety
- Lower Crime Rates
- Less Victims
- Less Property Damage
- A Vital, Vibrant Community all Across Tarrant County
- A More Just Society

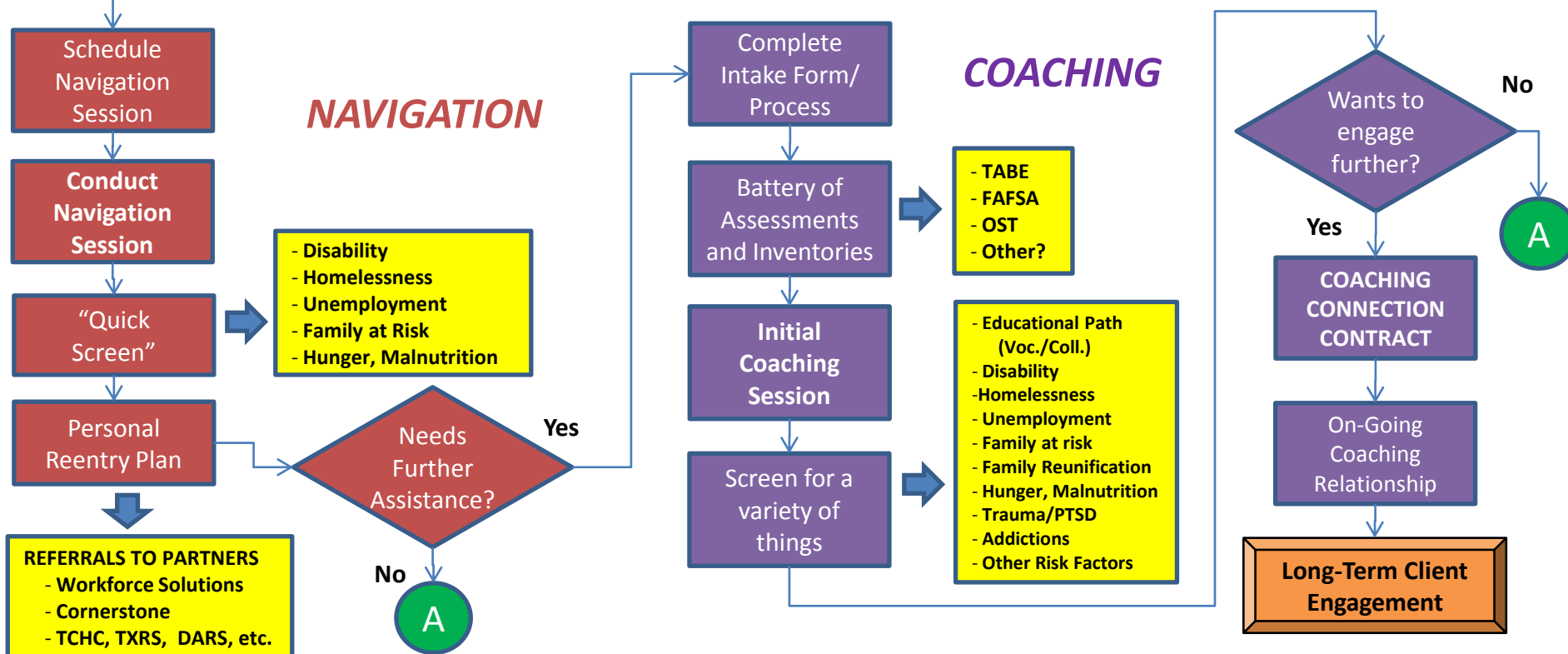
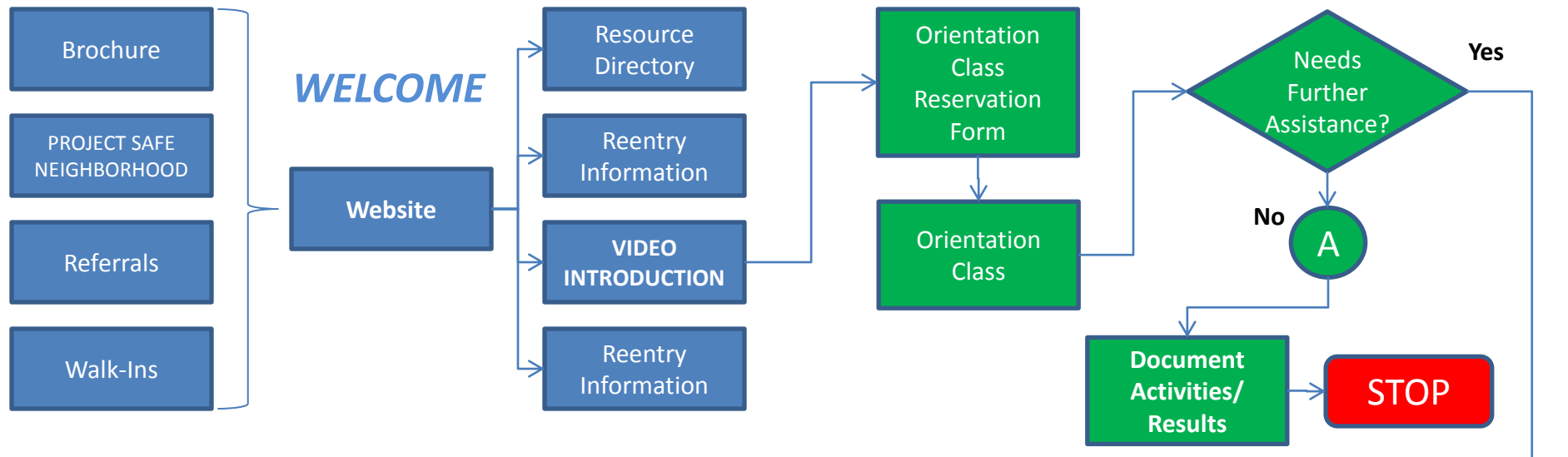
What are the First-Stop Benefits?

- **Walk-in Reentry Services - no appointment needed (Welcome, Orientation, Navigation)**
- **Connection to emergency services (food, clothing, hygiene) through CAN**
- **Free notary services for critical documents**
- **Free coffee!**
- **Huge network of resources (partners, programs, services, etc.)**
- **In-depth knowledge of employment opportunities**

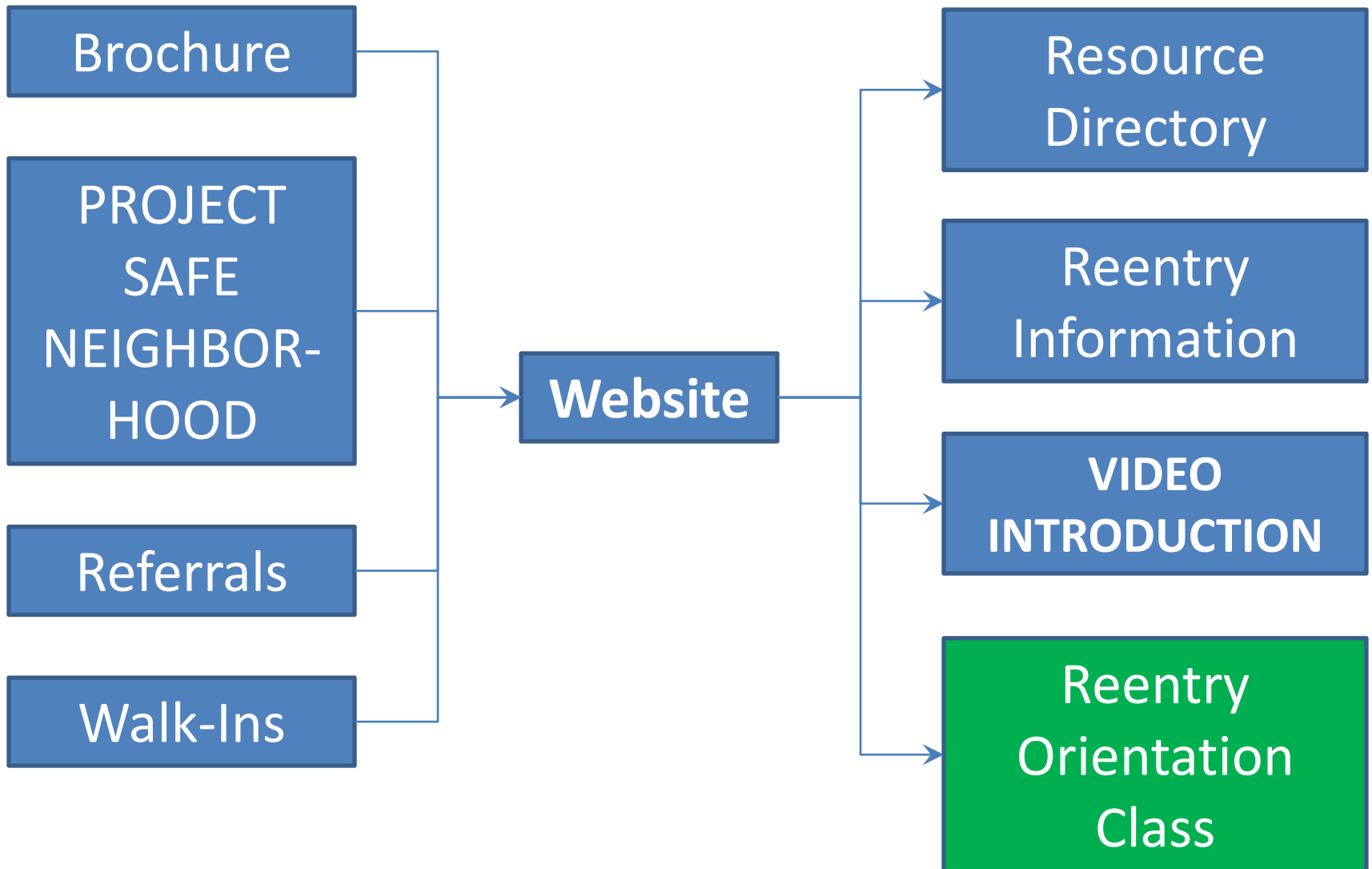
What are the First-Stop Benefits?

- **"For Partners"**
 - **Quality referrals, prepped and equipped**
 - **A central location to which you can refer those newly released from incarceration**
 - **On the bus line**
 - **Complimentary services to provide clients "that little something extra"**
 - **Orientation, Navigation & more classes coming**

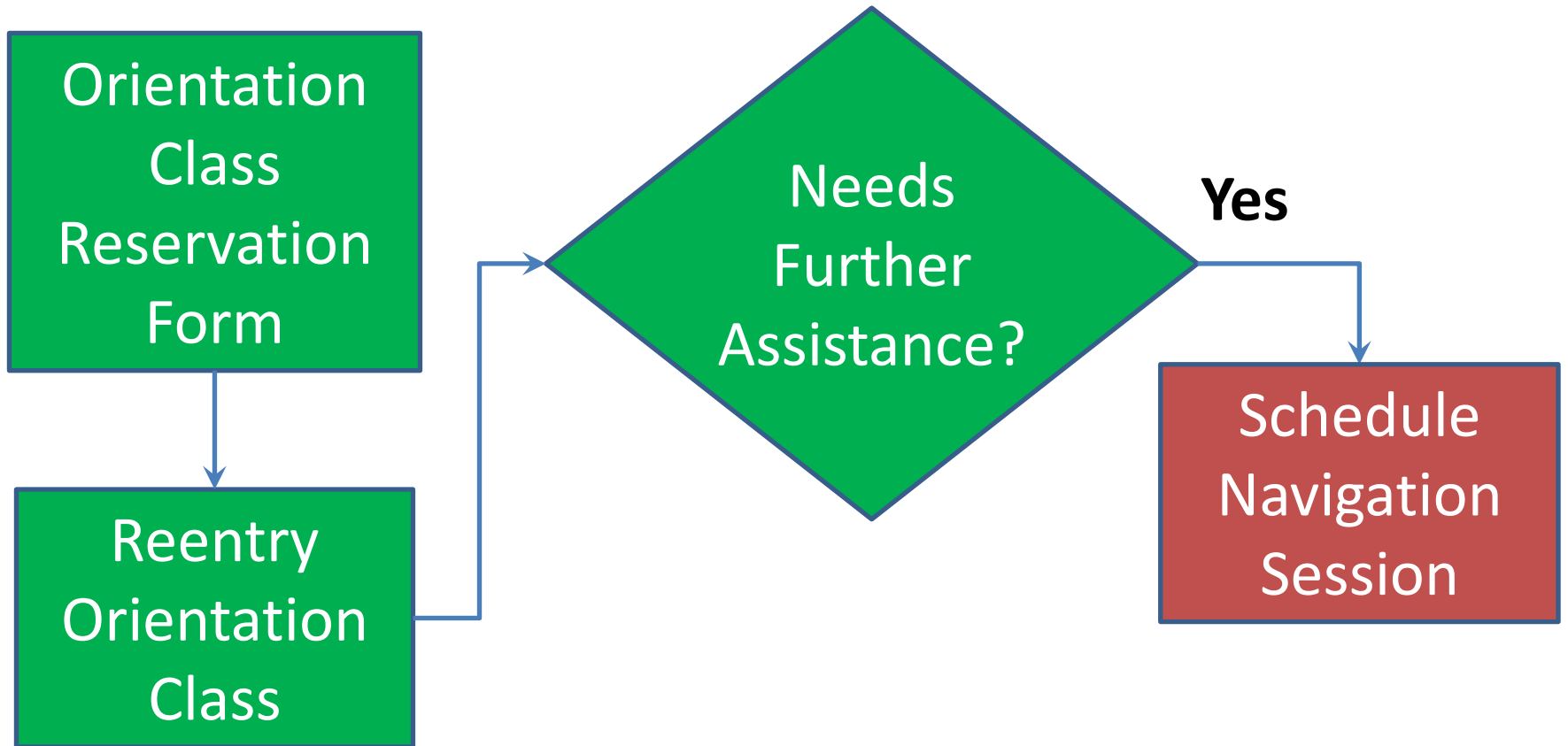
Reentry First-Stop Center Process Flow (Rev. 01)



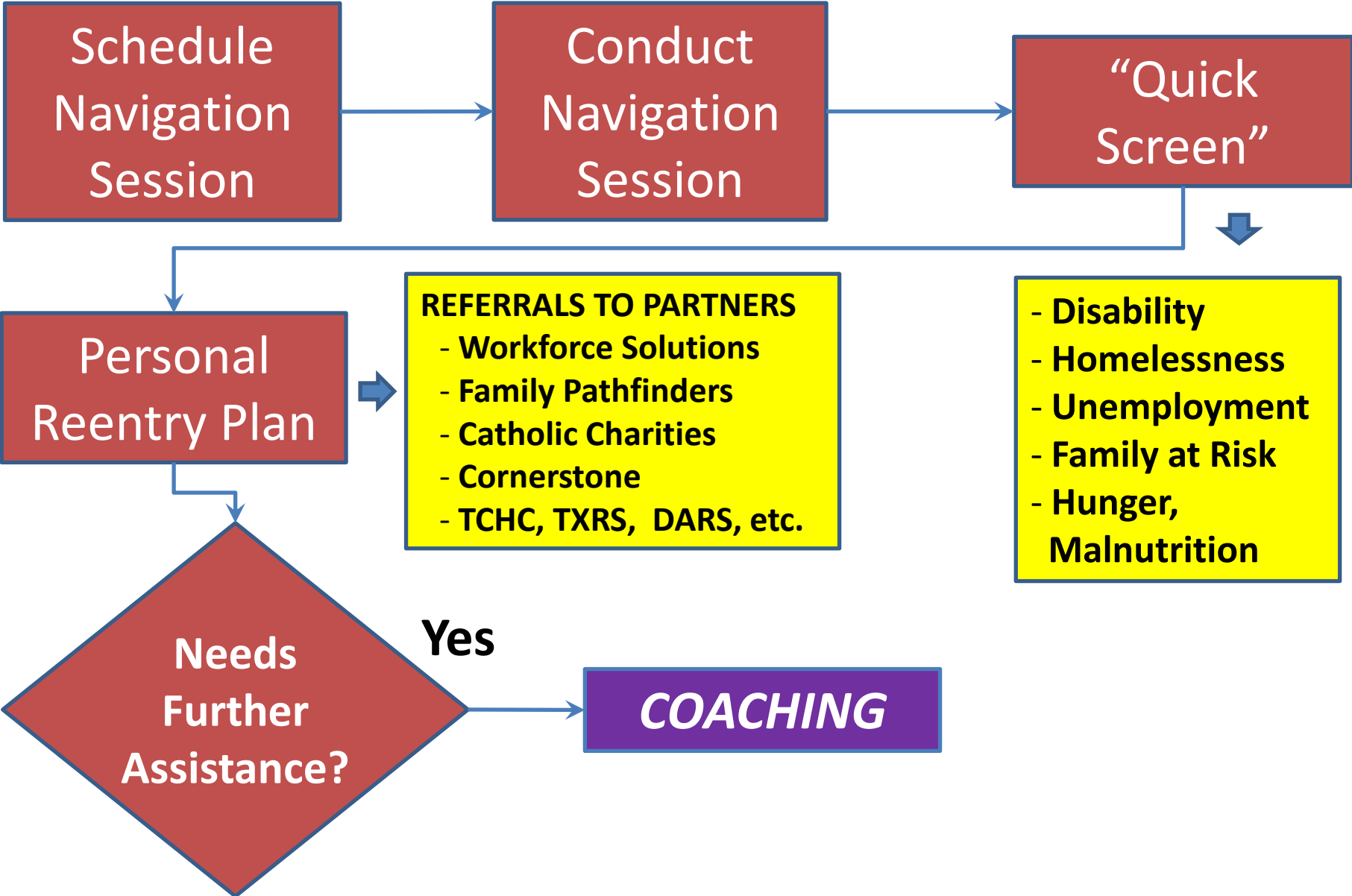
WELCOME



ORIENTATION



NAVIGATION



What About Follow-Up?

- **All Navigation sessions get a 30-day follow-up appointment**
- **Survey all participants at the 6-month interval**
- **Will be done by volunteers, supported by staff**
- **Will help us document our outcomes, which we will store in our database**
- **Hope to do more as funding increases**

Where Do We Get Our Clients?

- **We call them “Neighbors”**
- **Primary Source: *Project Safe Neighborhood***
- **Also:**
 - **Parole (We present at Orientations)**
 - **Referrals from Partners**
 - **Walk-ins at the First-Stop**
 - **Word of Mouth**

What Happens at Orientation?

- **Reentry Orientation for Tarrant County**
 - “Becoming your own case manager & job coach”
- **One hour on “Community Resources”**
 - 80 Categories of Resources!
- **One hour on “Employment Strategies”**
 - *The Roadmap to Employment in Tarrant County*
- **Job Club (with pizza!) afterwards**
- **Guest speakers on employment at the Job Club**

What Happens at Navigation?

- **Based on the 3 phases of PRI's "Success in the Community" matrix: *Survival, Stabilization, and Self-Sufficiency***
- **Those "Fresh-Out" get a basic-needs approach to their next 30 days**
- **For those who've been out more than 30 days, we focus on employment & barriers**
- **We use a "strengths-based" approach, as opposed to a "deficit-based"**

How Do We Refer?

- **We want to be “experts” on making quality referrals of our Neighbors to our partners in the community**
- **We have two customers: the Neighbor and the Partner**
- **We want our partners to be happy with us, because we are sending them a higher caliber of referral**
- **We aim to be accountable for this**

What About Coaching?

- **We are building our program based on the *Essential Reentry Model* from SRG and the *Success in the Community Matrix* from PRI**
- **All our Navigators will be C.R.P.'s**
- **All our Coaches will be C.R.P.'s and Certified Life Coaches**
- **We will be looking for funding to develop the Coaching program as soon as our implementation plan is done**

In Conclusion

- **Whether someone has been out 10 hours or 10 years, we have help for them at The First-Stop Center**
- **Please refer your clients to us**
- **The phone number is (682) 703-1600**
- **Better still, send them to our website, so they can reserve a slot in the next Reentry Orientation Class (www.tcreentry.org)**
- **Poster/Flyers are available today**

THANK YOU!

Q&A